



## “LYBOUSSAKIS CHIOS”

### General Particulars

Length Overall	31.60m
Breadth	9.50m
Draft	4.05m
Gross tonnage	392t
Port of Registry	Piraeus
Built	1990 UK
Bollard Pull	50 tonnes
Service Speed	14 knots
GMDSS	A2

### Capacities

Fuel.	81.4cu.m.
Fresh Water	26.1cu.m.
Detergent	2.0cu.m.
Foam	15.9cu.m.

### Class

Lloyd's  
+1001 Tug +LMC UMS MCA Class VII

### Main Power Plant

2 x Ruston 6RK270M, intercooled,  
turbo diesel main engines  
Total Rated Power 2500kW (3400 BHP)

### Propulsion

2 x Niigata z-pellers (ZP-3A) with Kort nozzles  
Rotable 360 degrees

### Electrical

3 x Gardner 6LXB 80KVA 440v phase 50Hz

### Deck Machinery

Hydraulic, remote controlled towing winch and anchor

Windlass on forecastle, Hydraulic towing winch aft, towing hook 50t BP

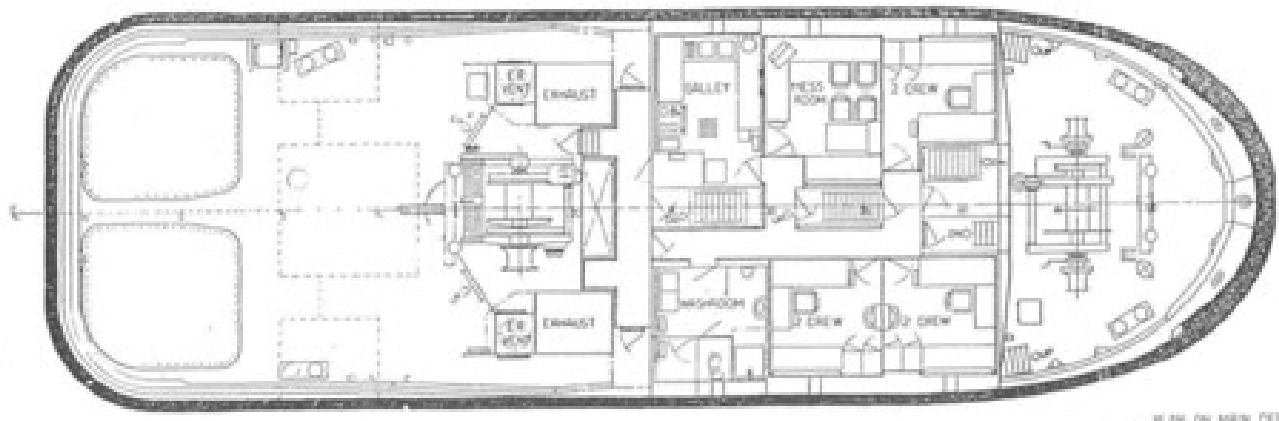
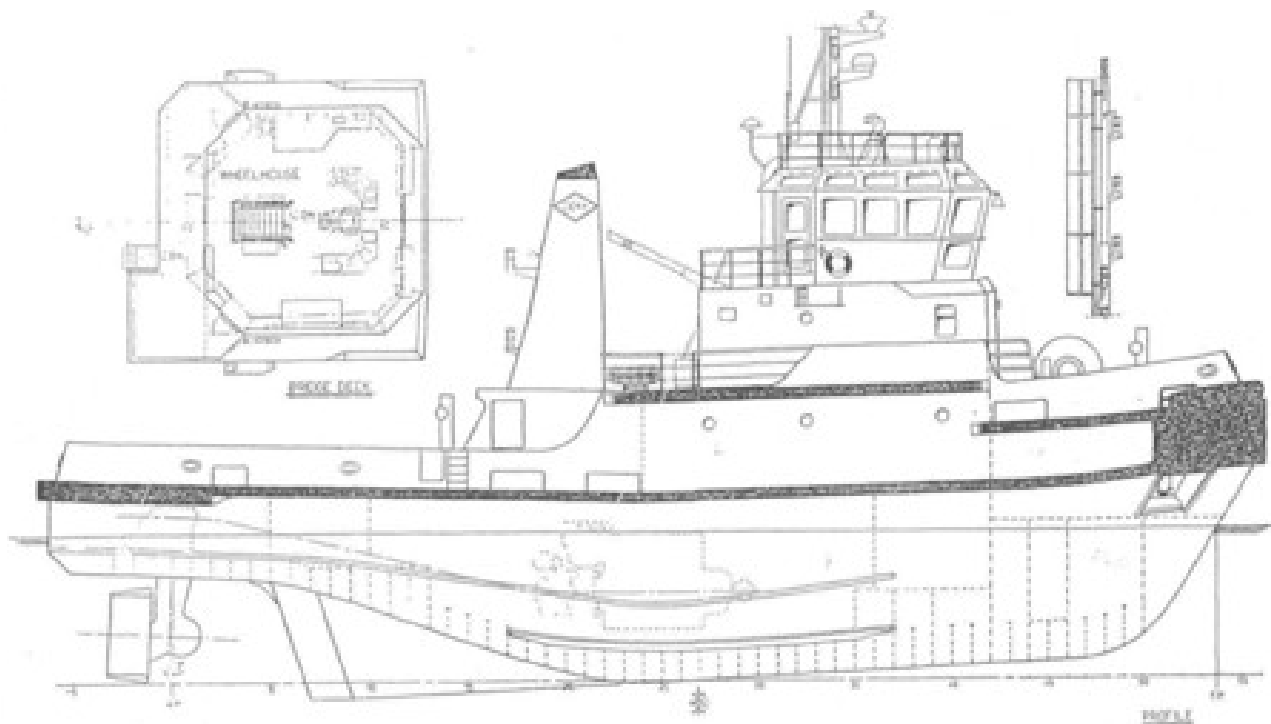
Portable oil dispersant spray nozzles -  
350litres/min

### Fire Fighting

2 x remote controlled masthead monitor - ttl  
1200M3/hr

2 x bow monitors - 500litres/min

2 Wheelhouse top monitors each supplying  
11500 gpm foam or 1300gpm water



PLAN ON MAIN DECK